

EXAMUS

USER GUIDE (ONLINE PROCTORING)



TECHNICAL REQUIREMENTS

- A PC or a laptop (mobile devices are not supported).
- CPU: Intel Core 2 DUO or later with SSE3 support,
- AMD Athlon x2 or higher;
- 2 cores and higher;
- 1.8 GHz and higher;

Operating system:

- Windows 7 and higher;
- OS X Yosemite 10.11 or later;
- Ubuntu 14.04 (x64) or later,
- Debian 8 or later
- OpenSUSE 13.3 or later,
- Fedora Linux 24 or later.
- RAM: 4 GB or more;

Installed browser (optional):

- Google Chrome latest version;
- Yandex Browser latest version;
- Free space on hard disk 500 MB;
- Stable internet connection;
- Internet connection speed is not less than 1 Mbps.
- Webcam with a resolution of at least 640x480 px.
- Allowed data transmission on network ports: 80 TCP, 443 TCP, 3478 TCP / UDP



WORKING WITH EXAMUS

HOW TO PREPARE THE WORKPLACE BEFORE TESTING

THE FOLLOWING STEPS MUST BE TAKEN BEFORE THE TEST:

- ✔ Ensure that the room is well lit
- ✔ Check your Internet connection
- ✔ Make sure that the camera and microphone are turned on and the camera lens is not covered
- ✔ Prepare a document for identification
- ✔ Connect your laptop to the power network (battery power sometimes reduces the performance of the device)
- ✔ Restart your computer for maximum performance
- ✔ Make sure that your browser settings don't block 3rd party cookie

- ✘ Turn off all unnecessary programs and tabs in the browser

STARTING THE TEST

- Please read the exam procedure, requirements for users, technical requirements for the equipment, confirm that you agree with the rules for the online testing and press Continue

I accept the Examus Proctoring System Terms and Conditions

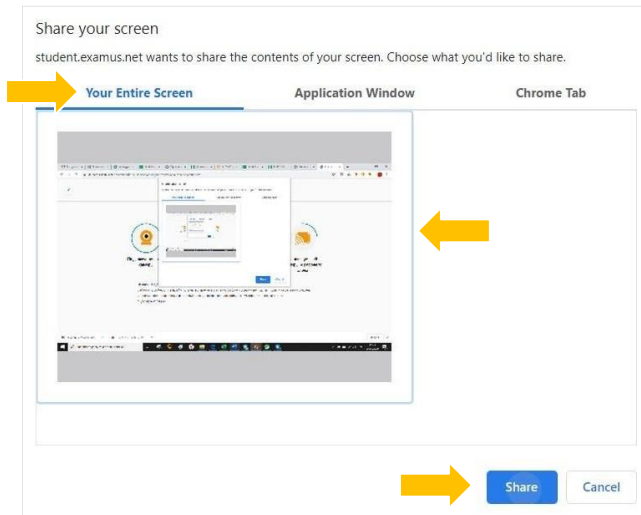
I accept the personal data processing agreement

Continue

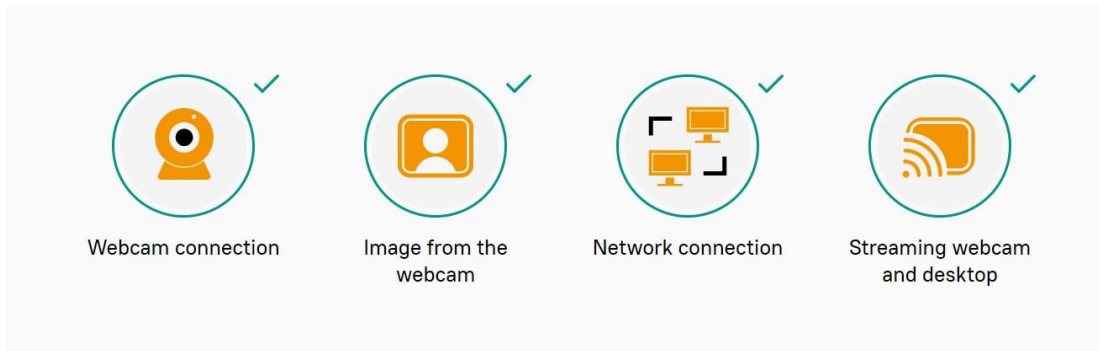
SYSTEM CHECK

The next step is checking your computer settings:

- In the pop-up window, to request access to the mic and webcam, press Allow.



- Wait for the completion of the checking process



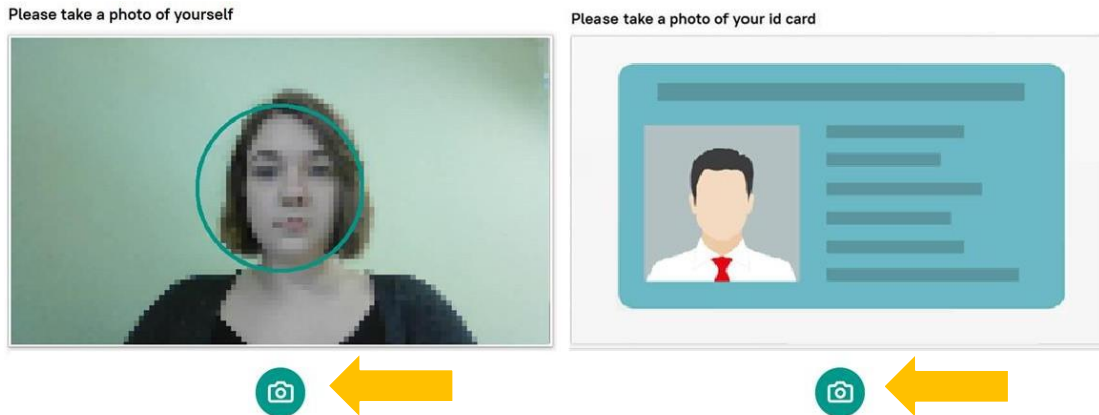
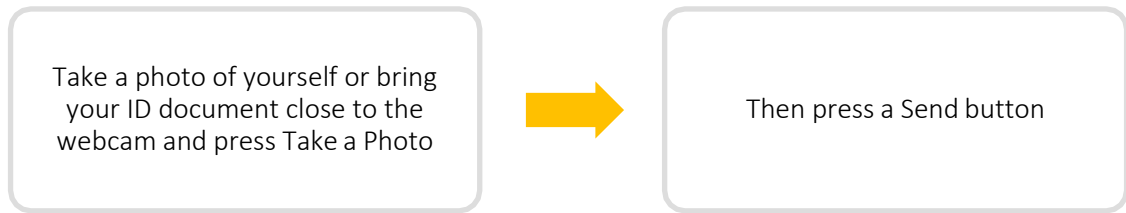
Note: Do not proceed to the next page if you're not ready to start the exam and go through the whole examination process.

Also, you can check your equipment and pass System check at this page:

<https://examus.com/syscheck>

IDENTIFICATION OF THE PARTICIPANT

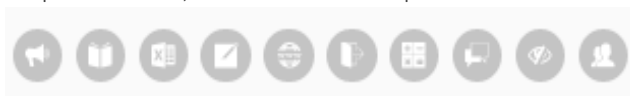
- Please follow the instructions on the screen.



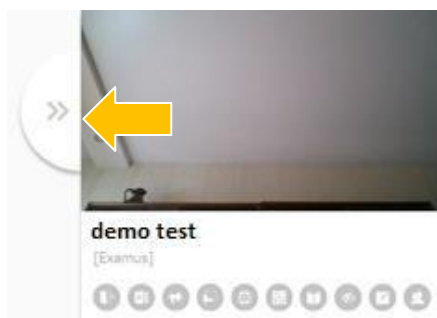
Note: Sometimes after identification system may ask you to login again.
Do not worry, the test will become available when you enter your login and password.

TESTING PROCESS

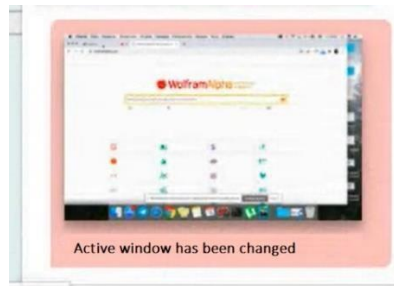
- Above the chat feed, you will see the examination rules. The active options are highlighted in color, while the inactive options are colorless. To see the function for a respective icon, hover the mouse pointer over the icon and wait for the pop-up tip.



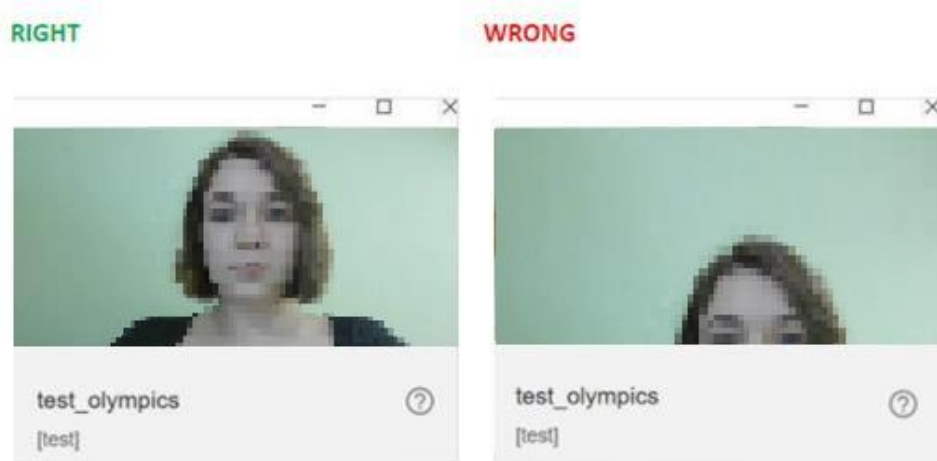
- If you need to hide or unhide the Examus sidebar, press the logo with the arrow to the left of the sidebar:



- If you perform prohibited actions, proctor will send a warning that will be displayed in the chat:



- During the exam process, you must be seen in the camera view:



- In the window with the test, press Start the Test and get started.
- Pay attention to the timer indicating the time remaining before the end of the exam:

Time left **0:29:53**

END OF TESTING

- If you are confident in your answers and ready to send them for marking, press End the Test button

- c. 3
- d. 2

Previous page



Finish attempt ...

- Please wait 30 seconds and close the Examus tab



EXAMUS TECHNICAL SUPPORT

In case of any problems, please contact the Examus Technical support: support@examus.com.